

# 2005 Ecotourism Australia 13<sup>th</sup> National Conference



## Huon Valley and Peppermint Bay Accommodation

### SMUGGLERS REST - Station Road, Dover

Smuggler's Rest is on the shores of beautiful Dover Beach overlooking the Islands of Faith, Hope & Charity in the D'Encartreaux Channel. Beachside one and two bedroom suites are fully self-contained including TV, video, full kitchen facilities, all linen and reverse cycle heat/cooling. There are tranquil gardens and outdoor areas.



#### Room only rates:

**1 bedroom Studio \$ 90 (single/twin/double) – SOLD OUT**  
**2 bedroom Suite \$ 114 (single/twin/double) - SOLD OUT**  
**Extra person \$ 18**

### KERMANDIE LODGE - Main Road, Port Huon

The Kermandie Lodge is nestled on the banks of the Kermandie Rivulet which flows into the scenic and calm waters of the Huon River. All the accommodation, in the Motel and in the Villa Units, has been recently upgraded and modernized for your convenience and relaxation. All have excellent water views. The villa units consist of a lounge room, 1 double bedroom and 1 multi-bed bedroom. They are fully self-contained with cooking, laundry and bathroom facilities. Meals can also be obtained at the adjoining restaurant.



#### Room only rates

**Motel Rooms \$ 96 (single) \$106 (twin or double) – ALL SOLD OUT**  
**Villas \$ 128 (single) \$156 (twin or double) – ALL SOLD OUT**  
**Extra person \$30**

### KERMANDIE HOTEL - 4518 Main Road, Port Huon

**\*\* Pub style accommodation \*\***

**Single Room \$ 60 – SOLD OUT**  
**Twin Room \$ 90**



## **DOVER HOTEL/MOTEL** –

Main Road, Dover

The Dover Hotel is situated on the peaceful shores of Esperance Bay in the far south of Tasmania. Enjoy the magnificent views and the best of country living that the Dover Hotel has to offer.

The Main dining room & Esperance Bar of the Dover hotel both offer a relaxed family environment overlooking picturesque Esperance Bay. There is a T.V. Lounge area, Jukebox, Pool Tables, Dart Boards, and a wood fire in winter.



All units contain heating, a telephone, a television, and facilities for making tea and coffee and all Self-Contained units contain Cooking Facilities. Guest Facilities include: Car park, Public Telephone and Licensed Restaurant.

**Room Rate: \$ 55 per person (twin, double or triple share only) OR \$ 96 per person (single share)**

## **DRIFTWOOD HOLIDAY ACCOMMODATION** - Bay View Road, Dover

Driftwood Holiday Accommodation is situated on the waterfront at Dover and is central to all the attractions of Tasmania's Huon Valley, D'Entrecasteaux Channel and Far South. There are several types of accommodation to choose from:

**Studio Cottages.** Self contained cottages, situated on the waterfront with expansive bay and mountain views, underfloor heating and quality furnishings.

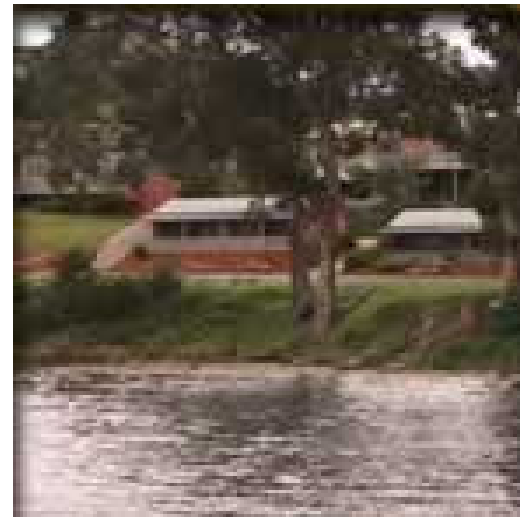
**Costs: \$ 150 (single) \$ 180 (twin/double)**

**The Beach House** is a two bedroom fully self contained house with sweeping mountain and coastal views from a huge verandah and expansive picture windows. Fully equipped with colour remote TV, DVD, VCR, CD player and supplementary electric heating, you can warm up by the woodheater or relax in your private Cedar Hot Tub. Queen size bed in main bedroom overlooking hot tub and two single beds in the second bedroom.

**Costs: \$ 239 (twin/double) \$ 300 (triple) \$ 360 (quad)**

**Cove House.** With magnificent scenery from the cray-fisherman's wharf, across the D'Entrecasteaux Channel to distant Bruny Island, Cove House is perfectly private with colour remote TV, DVD, woodheater, full bathroom and laundry facilities, undercover carparking and even your own BBQ and garden. This three bedroom house has one queen size bed and 4 single beds.

**Costs: \$ 216 (twin/double) \$ 252 (triple) \$ 288 (quad)**



**BOOKING FORM: 1 nights Accommodation on Tuesday 29 November 2005**

Please note there are limited numbers of each room configuration. Rooms will be allocated on a “first in, first served basis”. **Please complete and fax to 5546 0332 to e-Kiddna Event Management to make your accommodation booking.**

First Name \_\_\_\_\_ Surname \_\_\_\_\_

Company \_\_\_\_\_

If sharing accommodation: (please name other delegates) \_\_\_\_\_

***Kermandie Hotel***

Twin Share (2 persons)

***Kermandie Lodge***

**SOLD OUT**

***Dover Hotel/Motel***

1 bedroom unit: Double Bed       1 bedroom unit: Double Bed + Single Bed

2 bedroom unit: Double Bed + 2 Single Beds

2 bedroom apartment: 2 Double Beds + 3 Single Beds

***Driftwood Holiday Accommodation***

Cottage: Queen Bed       Cottage: Queen Bed + 2 Single Beds

The Beach House

Cove House

**Payment details:**

Mastercard     Visa     Bankcard

Cardholder name (please print)

\_\_\_\_\_

Card Number      /      /      /

Expiry Date      /

Signature \_\_\_\_\_

OR send cheque to  
e-Kiddna Event Management  
PO Box 411  
ANNERLEY QLD 4103  
ABN: 86 135 880 988

