

# CAPRICORN REGION



## LOCAL GOVERNMENT ELECTIONS 2016 #VOTEFORTOURISM

Capricorn Tourism Region includes the local government areas of Livingstone, Rockhampton region and Central Highlands.

By 2020 the destination vision for Capricorn is for industry and community to embrace the broader visitor economy to support innovative and sustainable island, coastal, mainland and wilderness experiences



### CAPRICORN INFRASTRUCTURE PRIORITIES FOR TOURISM

→ CONVENTION CENTRE (AS STAGE 1 OF CONVENTION CENTRE/STADIUM)

→ ROCKHAMPTON REGIONAL AIRPORT EXPANSION

#### Visitor economy in the Capricorn Region



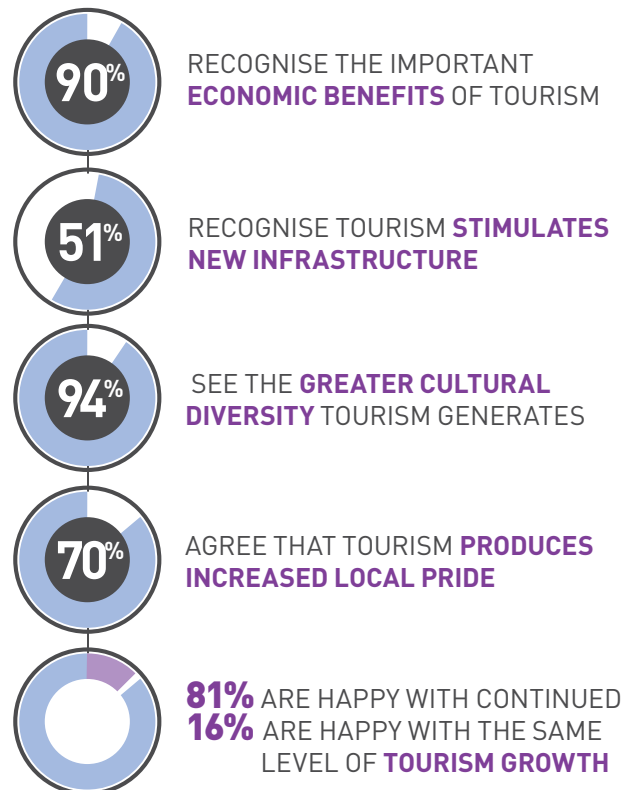
#### What tourism means to the Southern Great Barrier Reef\*

TOURISM IN SOUTHERN GREAT BARRIER REEF\* CONTRIBUTES **\$1.4b<sup>1</sup>** TO QUEENSLAND'S GSP



EVERY DOLLAR TOURISM EARNS, **ADDS AN ADDITIONAL 87 CENTS** TO OTHER PARTS OF THE ECONOMY

#### What do Capricorn Region Residents think about tourism?



\* Southern Great Barrier Reef region includes Capricorn, Gladstone and Bundaberg subregions. <sup>1</sup> Estimated contribution of the region's visitors economy to total tourism Gross State Product. Source of all data: Visitor economy estimates modelled from Tourism Research Australia IVS and NVS, June 2015; Tourism and Events Queensland, Tourism Economic Key Facts, September 2015; Deloitte Access Economics, Queensland Tourism Industry Outlook Potential to 2020, August 2012; Tourism Research Australia by Earthcheck, State Tourism Satellite Accounts 2013-2014; Tourism and Events Queensland, Social Indicators 2013. RIS2988